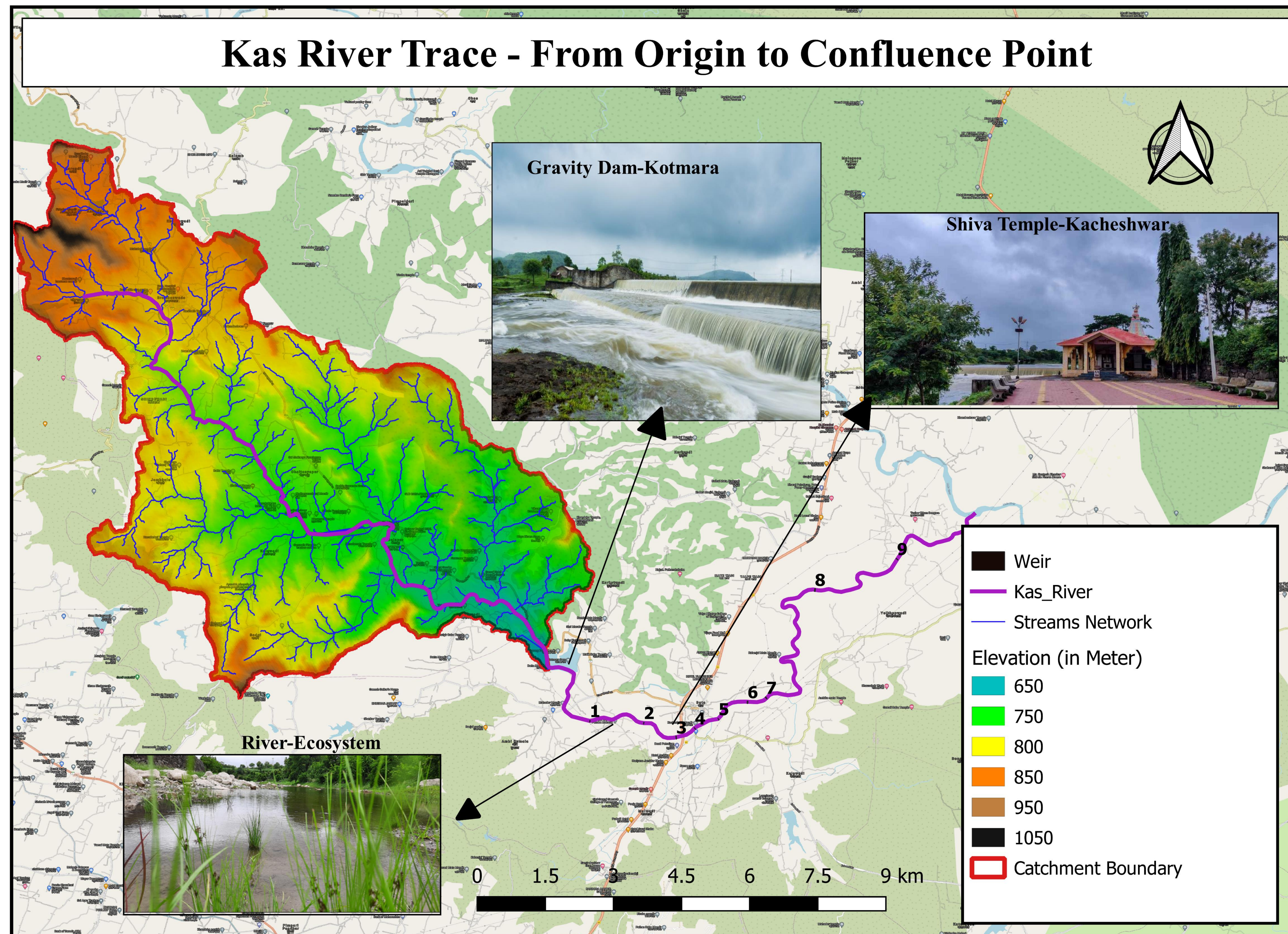


# Title: Reservoir Drainage network map of 6<sup>th</sup> order tributary of Godavari

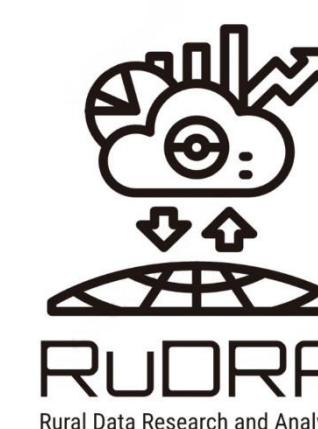
# Map description and analysis



## Introduction:

The Kas River is a six order tributary of Godavari River. It is the part of Mula basin in hilly zone of Deccan plateau in Maharashtra, India. One major dam Kotmara constructed over river and the water stored is utilized for agricultural purposes. The latitude of the site is 19°15'59.52"N and longitude 74° 6'57.09"E.. The total length of Kas River is 35.25km (from source to confluence).

Name of River	River Kas
Name of Dam	Kotmara Dam
Catchment Area	84.70
Average Rainfall	25 inches
Type of Dam	Earthen Dam
Length of Dam	890m
Storage Capacity	155.41 Million cubic ft
Flood Flow	38617 Cusecs
Height of Dam	29.10m
Width of Dam	4m
Dead Storage	11.60 Mcft
Length of Cannel	15Km
Cannel Discharge at Head	20.70 Cusecs
Gross Catchment Area	1259 Ha
Cultivated Catchment Area	1010Ha
Irrigated Catchment Area	806Ha
Utilization of Water	155.41 Mcft
Estimated Cost of Work	Rs. 97863836/-



**Team Name:** Mahesh S

**Topic:** Drainage Network Plan

**Team Lead:1) Mahesh**

**Organization:** Rural Data Research and Analysis Lab

**Contact/email:** [mahesh.shlke78@gmail.com](mailto:mahesh.shlke78@gmail.com)